

Tilgin HG2350

Ethernet Home Gateways

This family of products in the HG2350 series is equipped with the second generation 802.11ac Wi-Fi, with support for MU-MIMO and explicit beamforming

The products offers the latest WLAN connectivity in the home, in addition to gigabit routing and all other services offered with HGA software.



HG 2350 highlights

- **Latest Wi-Fi standard support**
 - 802.11ac, wave 2, MU-MIMO
 - Explicit beamforming @ 5 GHz
 - Any client beamforming @ 2.4 GHz
 - Fully support for intelligent Wi-Fi range extender
- **HGA gateway software**
 - Support for all HGA services
 - Full TR-069 support
 - VPN termination
 - Wi-Fi Hotspot
 - Fail safe provisioning
 - Operator log

Tilgin's HG2350 family embraces the second generation of 802.11ac technology. The product comes with two spatial streams for cost efficient, yet with a high capacity Wi-Fi solution supporting the latest technology.

The products uses 802.11ac technology supporting multi user MIMO, explicit beamforming, band steering and the 80 MHz bandwidth profile, giving superior Wi-Fi performance still with full QoS. The products supports up to 500 Mbps Wi-Fi throughput.

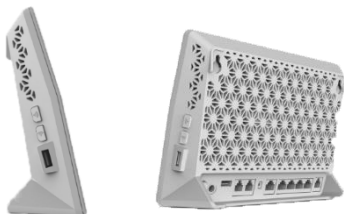
The new radio is fully backwards compatible with the 802.11n standard. This means that also older devices can benefit from improved Wi-Fi with the 5GHz Wi-Fi interface.

The HG2350 uses an any-client beamforming technology on the 2.4 GHz band which improves coverage on a per client basis, particularly suitable for clients that are equipped with only one antenna, such as smart phones or tablets. This technology does not require any specific support in the client itself, meaning that the benefits comes to all clients, new and old.

The product family is prepared for and can act as an Intel intelligent range extender controller, to control and manage one or more range extenders in a home for superior Wi-Fi coverage also in the most difficult environments. The solution support advanced features such as ability to seamlessly move connected clients between the gateway and the Wi-Fi extenders in the home.

The product has gigabit interfaces on all wires ports and support gigabit wired throughput in both directions simultaneously.

The HG2350 product family runs all the services offered with Tilgin HGA and is prepared for all foreseeable future services. Powered by HGA, makes the HG2350 very flexible to configure, monitor and use for new services. Se details in HGA datasheet.



Tilgin HG2350 Home Gateways

With the HG2350 family, Tilgin continues the evolution of its products by adopting new technologies to guarantee a state of the art operator offering.



HG2350 Model Configurations

Model	Memory		WAN	VoIP	LAN and Home Networking					
	Flash (MBytes)	RAM (MBytes)			Ethernet port 10/100/1000	PSTN	Ethernet ports	USB Host ports	WLAN	
							SSID	WPS	2.4 GHz	5 GHz
HG2351	128	128	1	2 x FXS	4 x GE	1	4+4	Yes	802.11n MIMO 2x2 2 streams	802.11ac MIMO 2x2 2 streams
HG2352				No						

All products support 2000 Mbps accumulated routing utilized with the built-in router engine.
All products support Line rate switching on all interfaces simultaneously.

Ethernet WAN	WLAN interfaces	Regulatory Compliances
10/100/1000 Base-Tx Autoneg, Auto MDI/MDI-X Connector: RJ-45	IEEE 802.11n, 2.4GHz MIMO 2x2, two spatial streams 300 Mbps link speed, 64 QAM 4 SSID Any-client beamforming 802.11bgn	CE mark WEEE RoHS
LAN interfaces	IEEE 802.11ac (5GHz), Wave 2 MIMO 2x2, two spatial streams 866 Mbps link speed, 256 QAM 4 SSID Explicit and implicit beam forming 802.11abgn,ac, d, e, i, h, v, w, k, r, ai Supported 802.11ac options: STBC, LDPC, MRC, DFS, MU-MIMO	Physical Specifications
10/100/1000 Base-Tx Autoneg, Auto MDI/MDI-X Connector: RJ-45	IEEE 802.11i/ WEP, WPA, WPA2 per SSID IEEE 802.11e/WMM, QoS for voice and video over WLAN WPS Solutions, Wireless Protected Setup, with PIN and Push Button Automatic channel bandwidth and optimum channel selection Internal antennas	Dimension 220x160x36 Weight: 0.65 Kg Operating temperature: 0-40C/ 32-104F Non-operating temperature: -20-60C/ -4-140F Operating humidity, RH, non-condensing: 10-90% Non-operating humidity, RH, non-condensing: 5-95% External Power Supply: In: 100-240VAC, Out: 12VDC 2.5A
Voice interfaces	Switch	
Ring voltage: min 45vrms Connector: RJ-11 REN, Ring Equivalency Number per FXS: 5	2048 MAC address table entries Full 4K width VLAN support Support for up to 64 simultaneous active VLAN	
USB Interface	32 CoS queues Traffic classification based on ingress port, 802.1q, 802.1p, DSCP, MAC address, IP protocol, IPv4/IPv6 address, IP packet length, UDP/TCP ports. Stacked VLAN support Ingress port and flow based policing Programmable support for traffic monitoring Support for jumbo frames	
Green mode		
Standby button for environmental friendly low power mode Designed for CoC compliance		

Tilgin HG2350 and Tilgin Home Application software



Tilgin Application Software is common for and integrated to all Tilgin Home Gateways. The application software can be easily upgraded from standard to premium features by normal auto-provisioning. *For further details of HGA see separate datasheet at www.tilgin.com.*

Full matrix of Tilgin hardware and HGA Software and Software modules compliance						
	HGA5xx	Wi-Fi hotspot	Storage	Secure access	3G – LTE WAN	Intelligent range extender solution
HG2351	√	√	√	√	√	√
HG2352	√	√	√	√	√	√